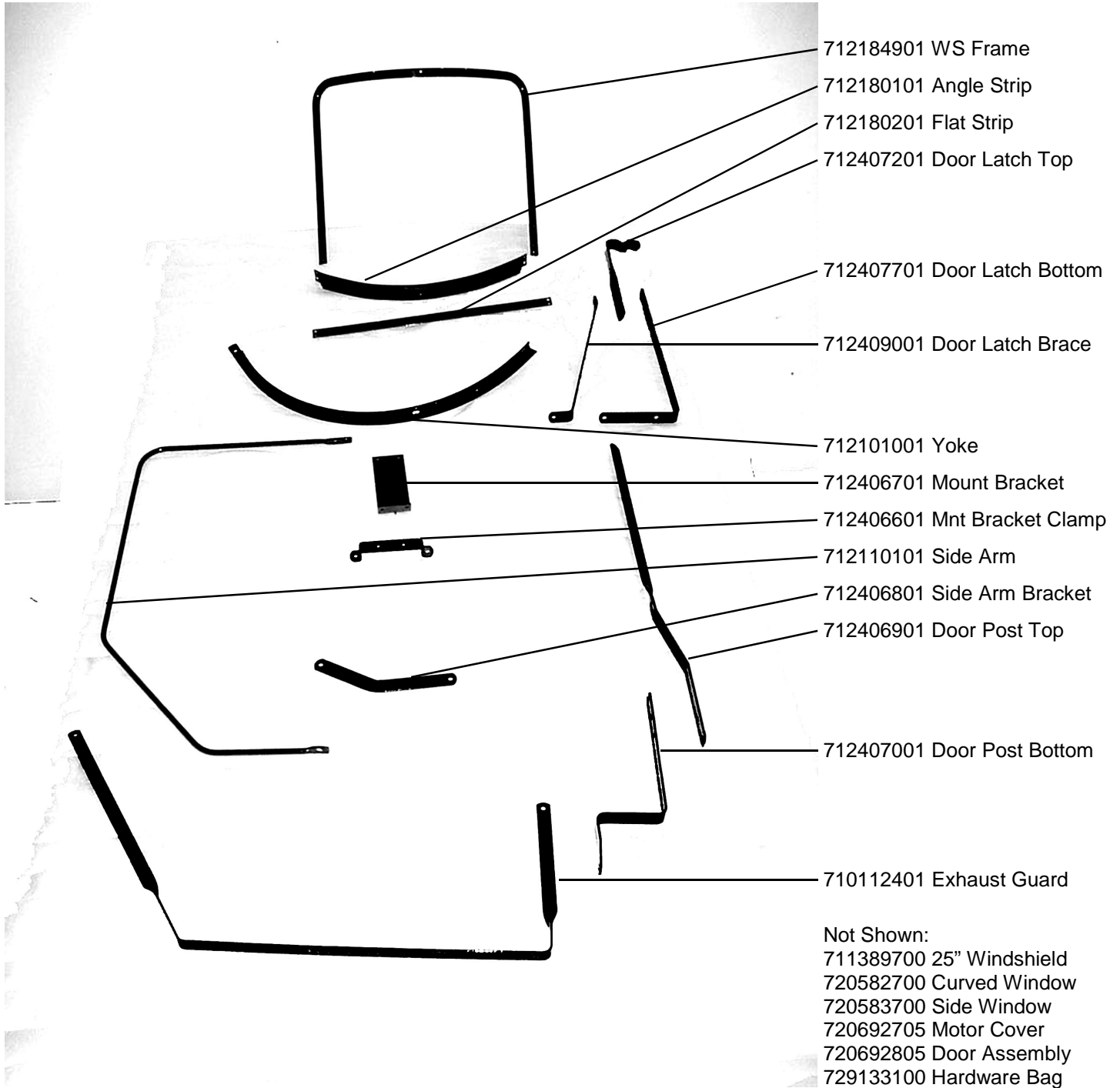


Installation Instructions for 307021331 or 307603529 FEMCO Weather Brake

Fits: International F706, F806, F1206 (Gas, Diesel & LPG)

Listed and shown below are the parts required to install the 1331 or 3529 Weather Brake. Carefully study the photographs and identify all parts before starting assembly. Verify that all parts are in the box. Follow the installation steps numerically.



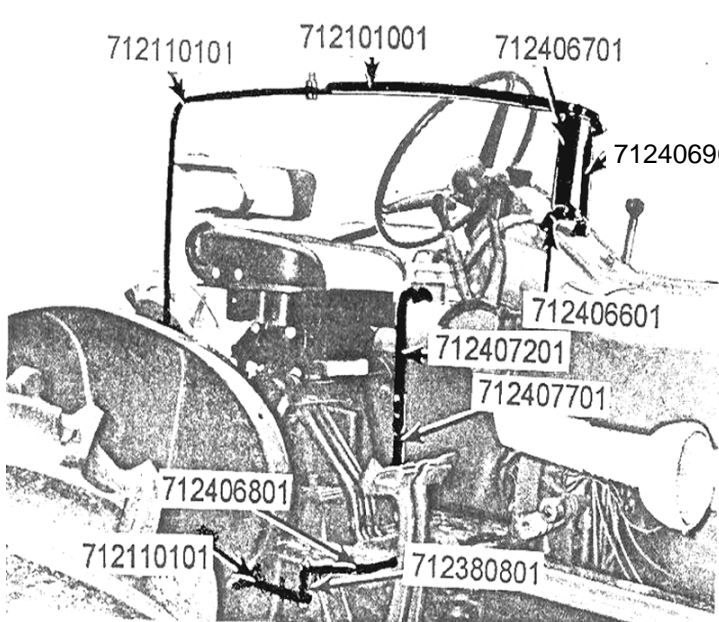


Figure 1

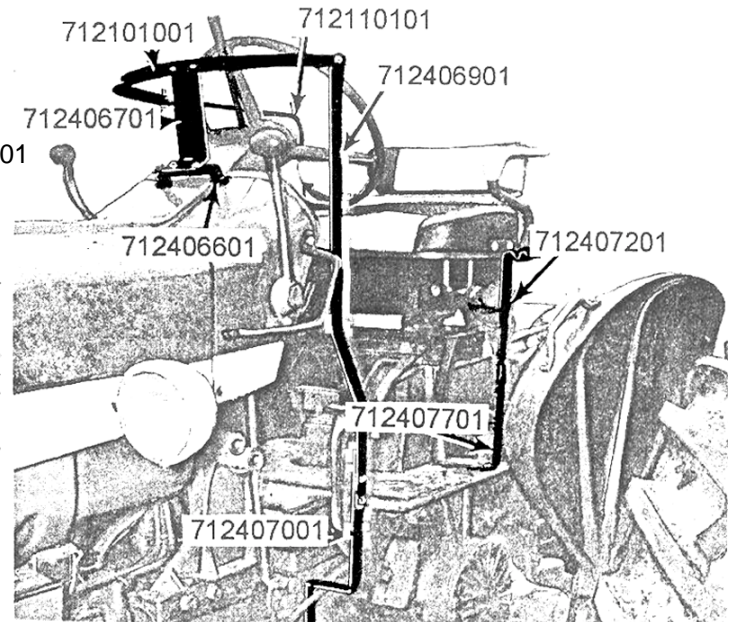


Figure 2



Step 1

1. Attach # 712406701 Mount Bracket to # 712406601 Mount Bracket Clamp using two (2) 5/16x3/4" hex bolts and nuts.
2. Attach # 712406601 Mount Bracket Clamp to the tractor using two (2) 5/16x3/4" hex bolts. See Figure 1 & 2
3. Attach # 712406801 Side Arm Bracket to the right side of the platform using front bolt in platform. The curve goes toward the rear of the tractor. See Figure 1 & 3
4. Attach # 7101124001 Exhaust Guard to side of cowl over exhaust system. See Figure 4.
5. Insert # 712110101 Side Arm into wide hem on right side of Motor Cover. Insert # 712101001 Yoke into wide hem at top of Motor Cover. Attach the Side Arm to the Yoke using a 3/8x1 1/2" hex bolt and nut. Place the bolt head under the assembly, the nut on top.

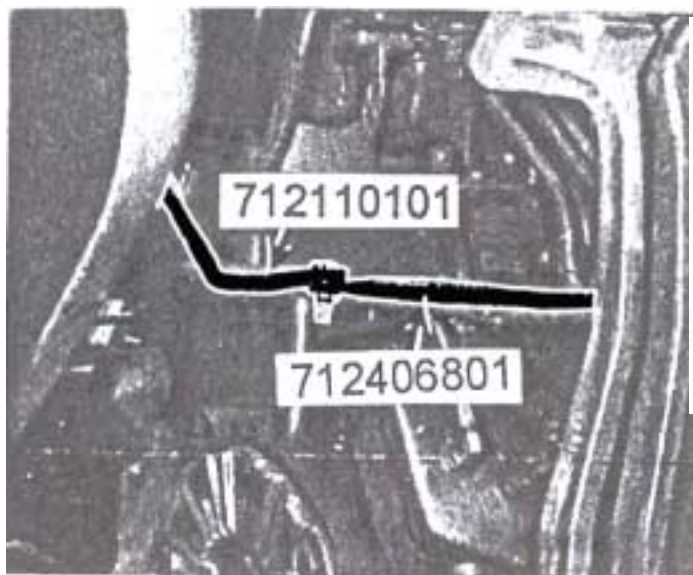


Figure 3

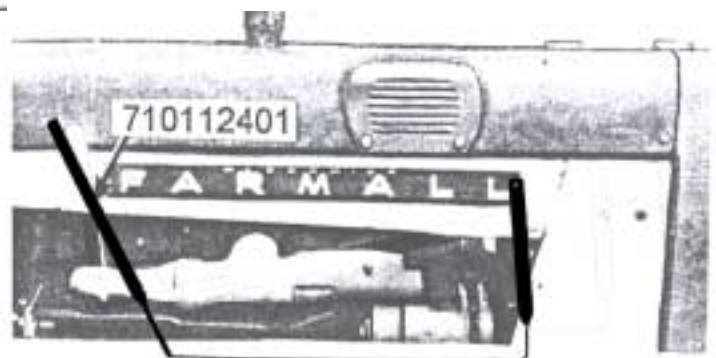
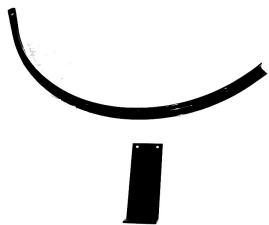


Figure 4



Step 6

6. Place the Motor Cover over the tractor. Attach the Yoke to the Mount Bracket using two (2) 1/4x3/4" hex bolt and nut. Place the bolt heads to the front and nuts to the rear.

7. Attach the Side Arm to the bottom of the Side Arm Bracket .

Model F706: use a 3/8x2 1/2" hex bolt and nut with # 712380801 Spacer between the Side arm and Side Arm Bracket. See Figure 1

Model F806 & 1206: use a 3/8x1 1/2" hex bolt and nut. Do not use the spacer. See Figure 3

8. Attach # 7122406901 Door Post Top to # 712407001 Door Post Bottom using two (2) 5/16x3/4" hex bolts and nuts.

Model 706: assemble to short set of holes.

Model 806 & 1206: assemble to long set of holes.

9. Insert the door post assembly into the wide hem on the left side of the Motor Cover. Attach the Door Post Top to the Yoke using a 1/4x1" hex nut and bolt. Place the bolt head to the rear and the nut to the front. Attach the Door Post Bottom to the top front of the gear case cover using the existing bolt.

10. Straighten the Motor Cover on the tractor. Tie straps to grommets on side of the Motor cover. Attach springs to grommets on the other side of the Motor Cover. Attach straps to springs using buckles. Adjust straps so tension is maintained on springs.

11.. Find hinge holes in Door Post and punch holes through Motor Cover at hole locations. Place Door Assembly level with the bottom of the Yoke and mark Door post hole locations. Cut slits in Door Assembly around wire frame and insert F1 clips. Attach F1 clips to Door Post using 3/16x3/4" hex bolts and nuts. Tie straps sewn on Motor cover to Door Assembly grommets. See Window Assembly Instructions

12. Attach # 712407201 Door Latch Top to # 712407701 Door Latch Bottom and # 712409001 Door Latch Brace using two (2) 5/16x3/4" hex bolt and nut. Attach door latch assembly to left rear of platform using existing bolt. Drill 13/32" diameter hole in platform using Door Latch Bottom as template for hole location and attach Door Latch assembly using 3/8x1 1/2" hex bolt and nut..

Model 706: assemble Door Latch Bottom and Bottom using short set of holes

Model 806 & 1206: assemble Door Latch Top and Bottom using long set of holes.



Step 8



Step 12

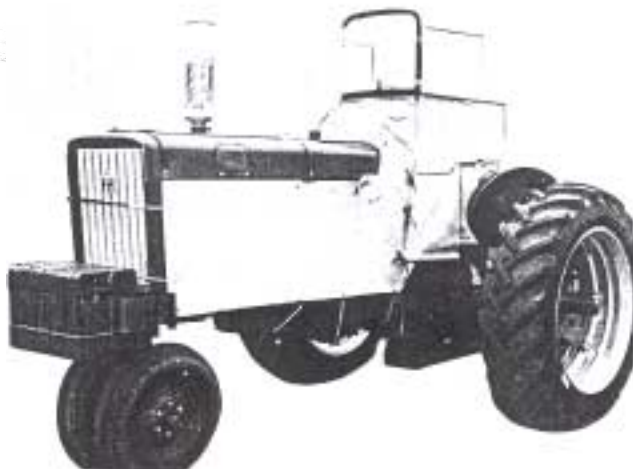
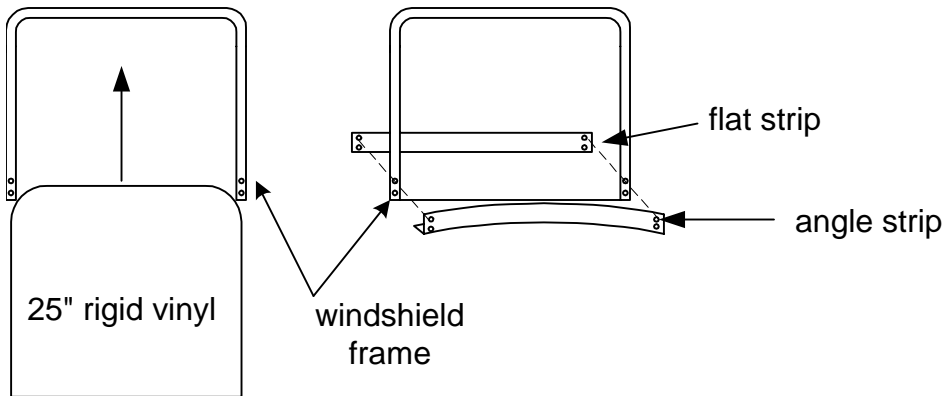


Figure 5 Assembled Weather Brake

WINDSHIELD/SIDE WINDOW ASSEMBLY INSTRUCTIONS

The pictures shown are generic drawings. The part shapes shown may vary from the parts supplied with this WB. The descriptions should be correct. Follow the instructions by step.



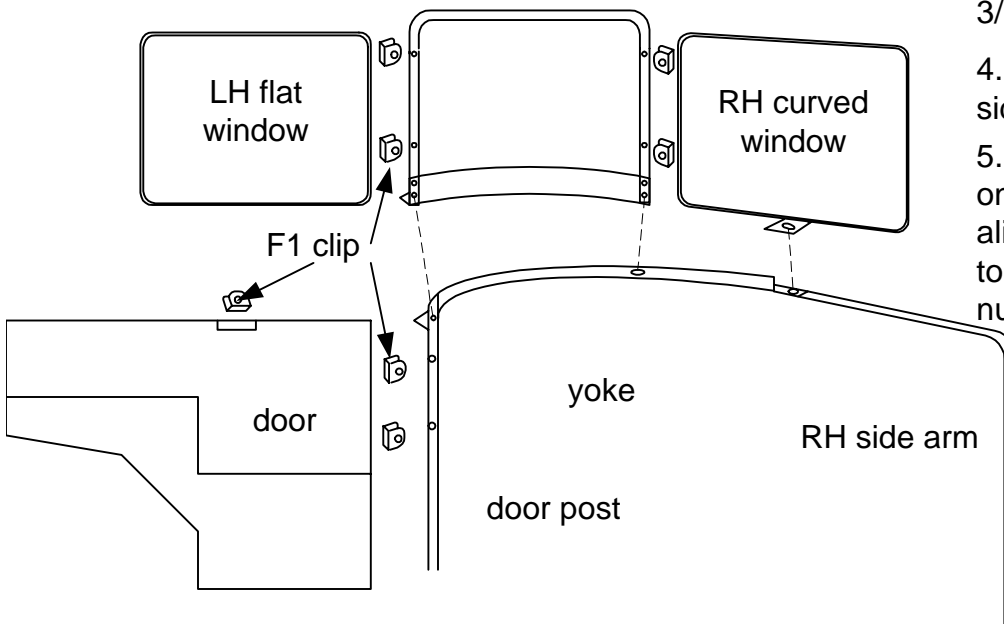
1. Slide the rigid vinyl into the windshield frame

2. Fasten the flat strip and angle strip to the windshield frame using 2 - 3/16 x 3/4 bolts in the top holes. Tighten nuts.

3. Cut slots in RH curved window to match holes in frame. Insert F1 clips in slots, around wire, and bolt to frame using 2- 3/16 x 3/4" bolts and nuts

4. Repeat step 3 for LH side window.

5. Place windshield assembly on yoke so lower RH hole aligns with slot in yoke. Bolt to yoke using 1/4 x 1 bolt and nut.



6. Remove nut, place lower LH hole over existing bolt at door post/yoke and replace nut.

7. Remove the nut and place the bottom of the RH side window over the existing bolt at the yoke/ side arm. Replace the nut.

8. Place an F1 clip through the cut out in the top of the door. Punch a small hole through the vinyl in the LH side window and bolt using a 3/16 x 3/4 bolt and nut

FEMCO, Inc.

General Offices
1132 W. 1ST STREET
Mcpherson, KS 67460
Phone: 620-241-3513
Toll Free 1-800-677-0898
Fax: 620-241-3532
www.femcomfg.com