

INSTALLATION INSTRUCTIONS

FOR

#1425 HINSON-FEMCO WEATHER BRAKE

FITS JOHN DEERE 4520 & 4620 ROW CROP (GAS, DIESEL OR LPG)

Listed below are the special parts required for the proper installation of the 1425 Hinson-Femco Weather Brake. Carefully study the photo diagrams showing the location of each part. Follow the various steps numerically. Each part has Part Number stamped on it.

- | | | |
|-------------------------------|------------------------------|---------------------------------|
| 1 - #712103301 Yoke | 1 - #720734404 Door | 1 - #712287001 Door Latch |
| 1 - #712239401 Side Arm | 1 - #712235001 Saddle | 1 - #710083101 Gear Shift Guard |
| 1 - #712242901 Mounting Brkt. | 2 - #712234501 Saddle Braces | 1 - #710083201 Side Arm Brkt. |
| 1 - #712295501 Pedal Guard | 1 - #712295601 Door Post | 1 - #710083301 Exhaust Guard |

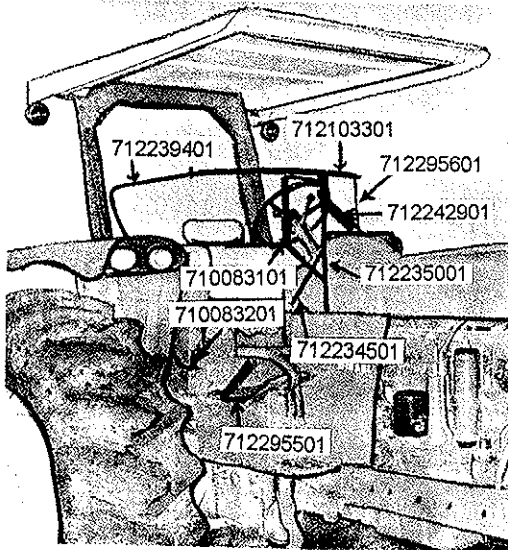


Figure 1

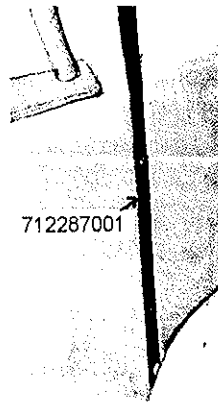


Figure 2

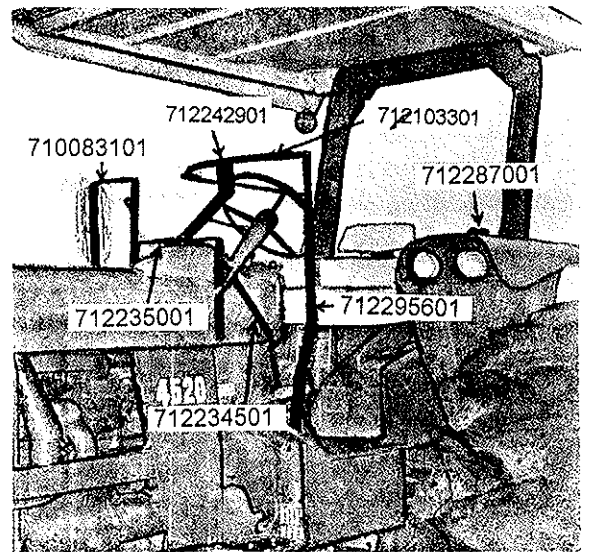


Figure 3

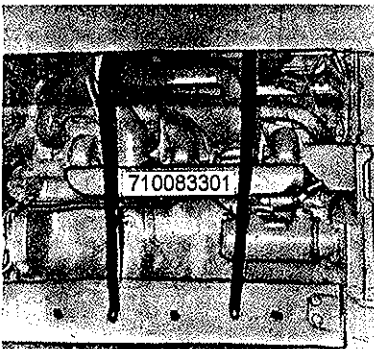


Figure 4

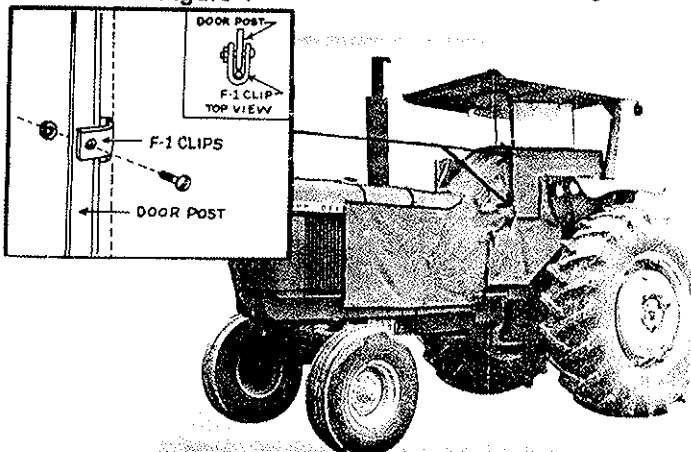


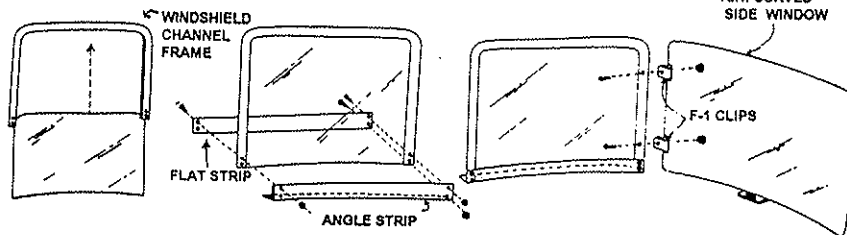
Figure 5

1. Attach bottom of door latch to fender using bolt in fender. Drill hole in fender through hole in door latch and attach to fender with 3/8" x 1 1/2" bolt. See Figure 2.
2. On right hand side bolt gear shift guard onto tractor using the same 5/16" x 1" bolts to install the saddle on the dash cowl. **Note: Remove only one bolt on each side of cowl at a time,** attach the mounting bracket to the saddle. Use 5/16" x 3/4" bolts. See Figures 1 and 3.
3. Install the two saddle braces. Using 5/16" x 1" bolts, fasten the lower ends to the cowl first and then the top ends to the saddle. See Figures 1 and 3.
4. Bolt pedal guard to platform using 3/8" x 1" hex head bolt. Place (2) 3/8" flat washer under pedal guard. If desired, drill another hole into platform through extra hole in guard and bolt to platform using 3/8" x 1" bolt and nut. See Figure 1.
5. Bolt the door post to platform using 3/8" x 1" hex head bolt. Place (2) 3/8" flat washers under door post. There is another hole in bottom of door post which can be drilled and bolted to platform but do not do this until cover is completely installed. See Figure 3.
6. Bolt side arm bracket to platform using bolt in console. See Figure 1.
7. Bolt exhaust guard to hood using 1/4" x 1" bolts & nuts. To attach bottom use 3/8" x 1 1/2" hex head bolts, nut & washers. See Figure 4.
8. Place vinyl cover over tractor, sliding the wide hem on left side over the door post. See Figure 5.

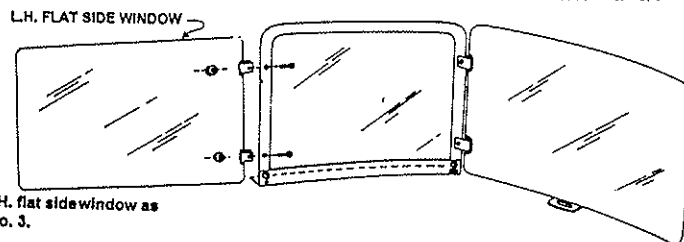
9. Insert the side arm in the wide hem at the right rear of vinyl. Bolt bottom of side arm to side arm bracket using 3/8" x 1 1/2" hex head bolt and nut.
10. Insert the yoke in top hem of vinyl. Attach the right side to the side arm using 3/8" x 1 1/2" bolt. Bolt yoke to mounting bracket using (2) 1/4" x 3/4" flat head bolts and nuts.
11. Attach the left side of yoke to top of door post using 1/4" x 1" bolt. Straighten vinyl, tie on straps and use springs to adjust straps. Use F1 clips and 3/16" x 3/4" bolts, install door on door post. Tie tapes to eyebolts in door flap. See Figures 3 & 5.
12. Attach bottom of door latch to fender using bolt in fender. Drill hole in fender through hole in door latch and attach to fender with 3/8" x 1 1/2" bolt. See Figure 2.

WINDSHIELD ASSEMBLY INSTRUCTIONS

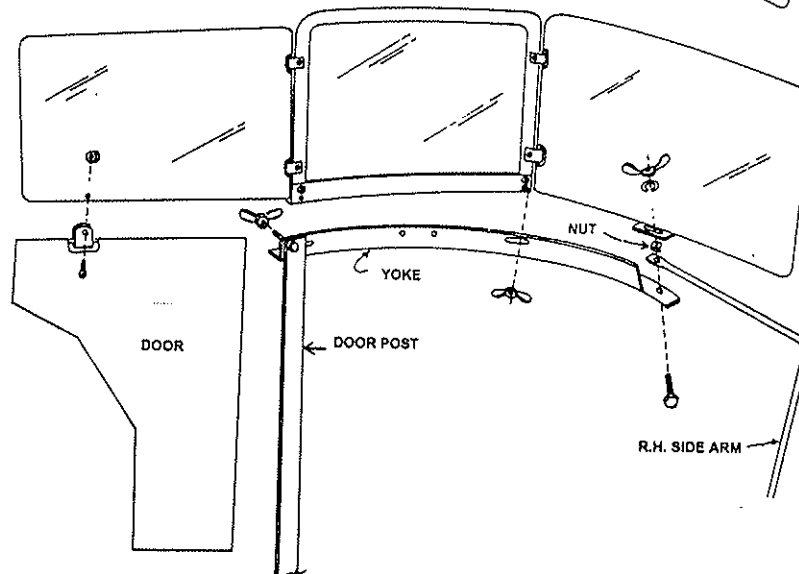
1252
1258
1263



1. Slide glass in channel of windshield frame.
2. Assemble flat strip and angle strip to windshield channel using two 3/16" x 1/2" bolts in top holes and 1/4" x 1" bolts in lower holes. Tighten nuts.
3. Cuts slots in vinyl as shown in picture, insert F-1 clips in slots of R.H. curved side window. Secure this assembly to windshield channel frame with 3/16" x 3/4" bolts.



4. Install L.H. flat sidewindow as in step No. 3.



5. Place windshield assembly on yoke so bolt in lower right hand corner of windshield fits into slot in yoke. Place hole in lower left corner over bolt in top of door post. Secure with wing nuts.
6. Secure right side window to rear edge of yoke as shown using flat lock washer and nut.
7. Insert F-1 clip in cut out in top of door, punch hole through canvas in L.H. flat side window as shown. Secure with 3/16" x 3/4" bolt.

FEMCO, Inc.

GENERAL OFFICES
500 North 81 By-Pass
P.O. Box 1186
McPherson, Kansas 67460
Phone: 1-316-241-3513
FAX: 1-316-241-3532
Toll Free: 1-800-677-0898

Subsidiaries
HINSON-FEMCO
JANTZ-FEMCO
FEMCO PLASTICS
AMERICAN PRIDE
GOLF PRODUCTS