

# INSTRUCTIONS

## WINDBREAKER

***FITS: CASE IH C SERIES***



**GENERAL OFFICES**

500 North 81 By-Pass  
McPherson, Kansas 67460  
Phone: (316) 241-3513  
FAX: 1-316-241-3532  
Toll Free: 1-800-677-0898

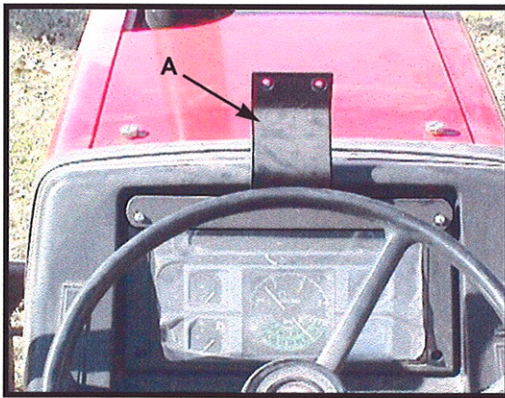
*Subsidiaries*

*HINSON-FEMCO  
FEMCO PLASTICS*

FORM NO. 286301300 / 11-99

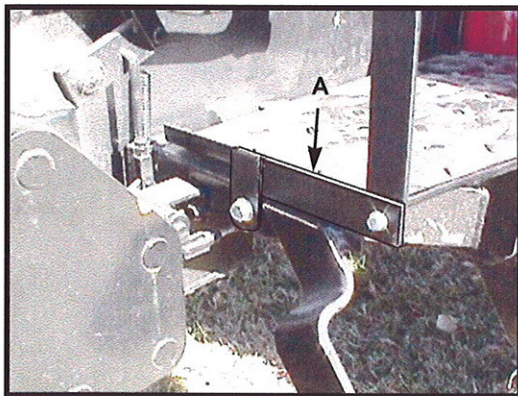
**IMPORTANT:** READ AND UNDERSTAND ALL INSTRUCTIONS BEFORE MOUNTING WINDBREAKER. DO NOT TIGHTEN HARDWARE UNTIL INSTRUCTED TO DO SO.

---



### YOKE BRACKET

1. Remove top of hood from tractor.
2. Remove two (2) top bolts from dash.
3. Drill holes out using a 7/32" dia. bit.
4. Attach yoke bracket (A) to dash using two (2) #10 x 1 1/2" bolts and nuts.
5. **TIGHTEN BOLTS.**
6. Replace hood.

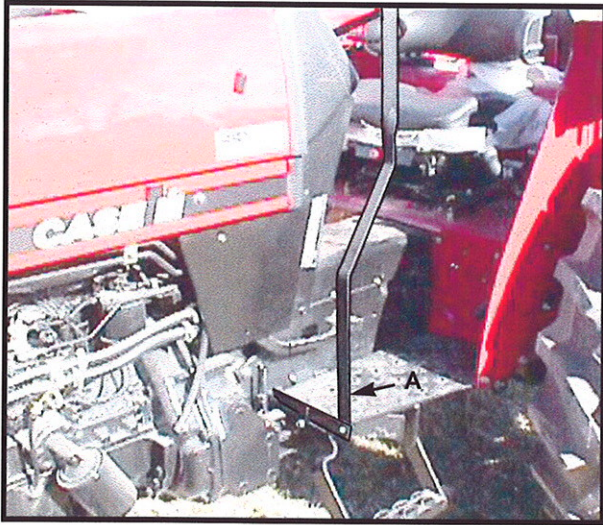


### BRACKET DOOR POST

1. Attach bracket door post (A) to front of foot rest using one (1) 3/8" x 1" bolt and nut.
2. **TIGHTEN BOLT.**

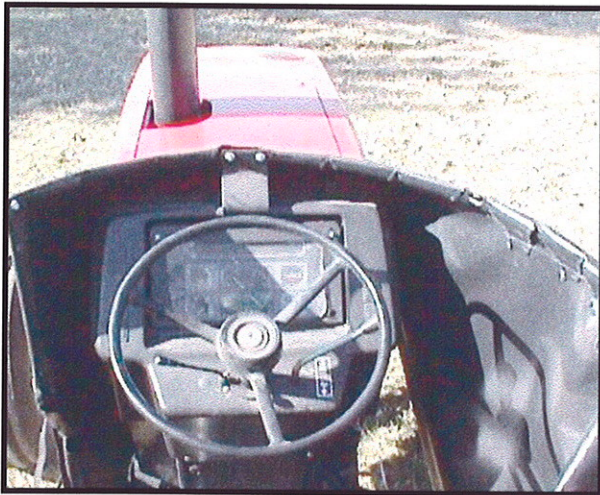


(2)



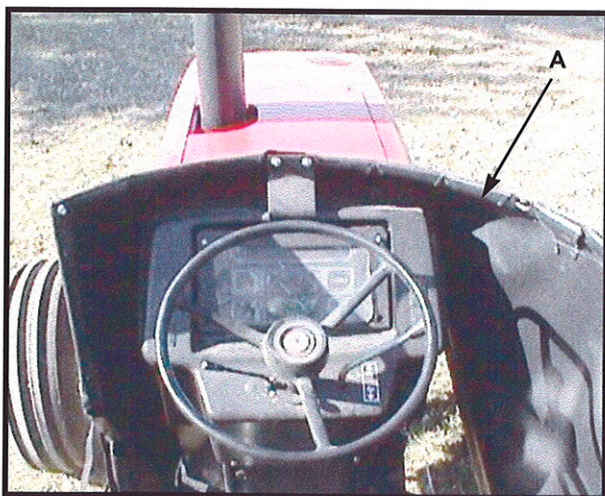
## DOOR POST

1. Attach door post (A) to bracket door post using one (1)  $1/4"$  x  $3/4"$  bolt and nut.
2. **TIGHTEN BOLT.**



## MOTOR COVER

1. Insert 3" hem on left side of motor cover down over door post.
2. Arrange motor cover over top of hood and down sides.



## YOKE

1. Insert yoke (A) into top 3" hem of motor cover.
2. Attach yoke to yoke bracket using two (2)  $1/4"$  x  $3/4"$  bolts and nuts. **NOTE:** Head of bolt is to be outside.
3. Attach yoke to door post using one (1)  $1/4"$  x 1" bolt and nut. **NOTE:** Head of bolt is to be inside.

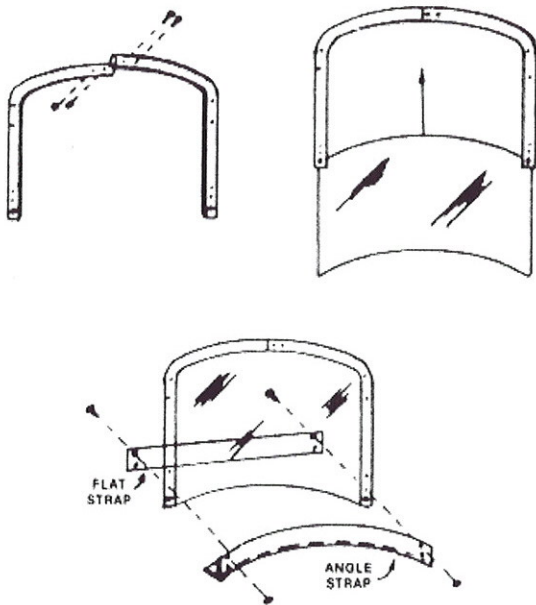




## SIDE ARM

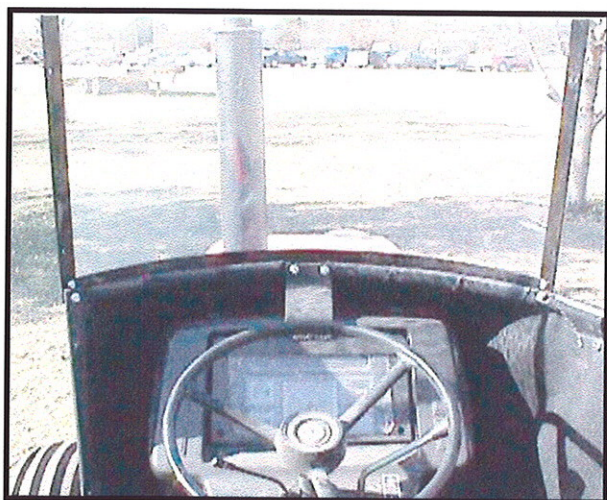
**NOTE:** Bent side arm (shown) is for lower fenders.  
Straight side arm (not shown) is for high fenders.

1. Insert side arm (A) into 3" hem of motor cover.
2. Attach front of side arm to yoke using one (1)  $3/8"$  x 1" bolt and nut. **NOTE:** Head of bolt down.
3. Mark location for a  $9/32"$  dia. hole in fender and drill.
4. Attach to fender using one (1)  $1/4"$  x  $3/4"$  bolt and nut.
5. **TIGHTEN ALL BOLTS.**



## WINDSHIELD ASSEMBLY

1. Attach left and right window frames using two (2) #10 x  $1/2"$  bolts and nuts.
2. Slide glass in channel of windshield frame.
3. Attach flat strip and angle strip to windshield frame using two (2) #10 x  $1/2"$  bolts and nuts in second holes only.
4. **TIGHTEN BOLTS.**



## WINDSHIELD ATTACHMENT

1. Remove nut on door post and yoke and attach assembled windshield to door post and yoke.
2. Attach other side of windshield to yoke using one (1)  $1/4"$  x 1" bolt and nut. **NOTE:** Head of bolt to inside.
3. **TIGHTEN BOLTS.**



(4)



## DOOR

1. Locate holes in door post and cut holes in fabric.
2. Hold door (A) to door post and bottom of windshield and mark location of holes in door post to door.
3. Cut 5/8" slots next to wire frame of door and attach to door post using two (2) #10 x 3/4" bolts, nuts and clips.
4. Tie door flap (B) to motor cover.
5. **TIGHTEN BOLTS.**



## LEFT WINDOW

1. Using same procedure as door mark location of holes in windshield to left window (A) and cut 5/8" slot.
2. Attach left window to windshield using two (2) #10 x 3/4" bolts, nuts and clips.
3. 3" from back of left window cut slot and hole and attach left window to door using one (1) #10 x 3/4" bolt, nut and clip.
4. **TIGHTEN BOLTS.**



## RIGHT WINDOW

1. Using same procedure as door and left window attach right window (A) to windshield using two (2) #10 x 3/4" bolts, nuts and clips.
2. Remove 3/8" nut and attach bottom of right window to yoke and side arm.
3. **TIGHTEN BOLTS.**
4. **NOTE:** Window can be bent to conform to side arm.





### DOOR LATCH

1. Position door latch (A) to inside left fender and mark location for two (2) 9/32" dia. holes and drill.
2. Attach door latch (A) to fender using two (2) 1/4" x 3/4" bolts and nuts.
3. **TIGHTEN BOLTS.**



### DUAL LOCK STRIPS

1. Cut plastic dual lock into 2" strips.
  2. Surface must be cleaned with a mild detergent to assure proper application of dual lock strips.
- NOTE:** Do not peel backing from strips at this time.
3. Apply cut strips to all dual lock sewn to motor cover.
  4. Arrange motor cover to tractor. Peel the back from the dual lock strips and apply to tractor. Repeat this procedure for all dual lock strips.



### TIE STRAPS

- IMPORTANT:** Cloth straps are not to be attached to any moving, rotating or heat generating points of tractor. Any excess cloth strap is to be cut off.
1. Tie cloth strap to grommets on bottom of motor cover and route to other side and tie.
  2. Tie cloth strap to other grommets and tie to tractor.